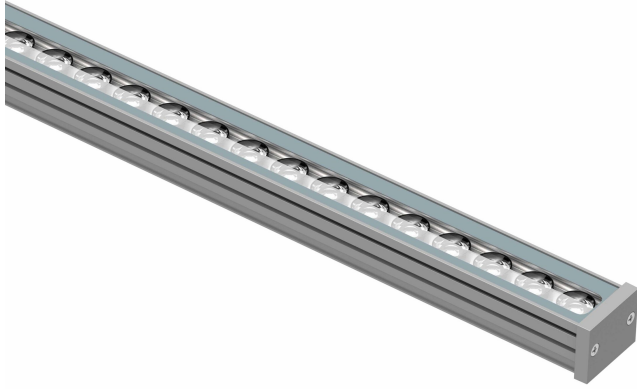
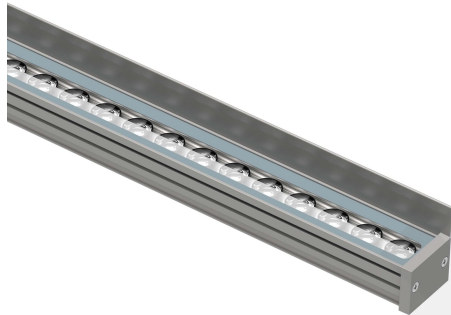


PRODUCT INFORMATION

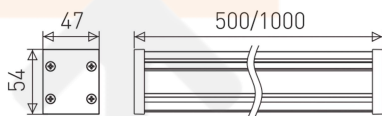


Application Type	Wall washer
Housing Type	aluminium extrusion
Colour Temperature	5000K, 3000K, 4000K
Dimmable	Yes
Driver	Inbuilt
Controls	Analog, Dali, On/off

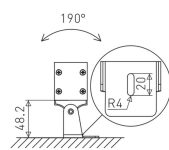


3030 CRI 70 IP64 (Single Color on/off)

Model	LED QTY (pcs)	Power (w)	Length (mm)	CCT (k)	Luminous Flux (lm)	Beam Angle	Weight (kg)
L.546A.10.0009.020.XX.01.050	9	9	500	3000/4000/5000	705/705/757	20°	1.5
L.546A.10.0009.040.XX.01.050	9	9	500	3000/4000/5000	705/705/757	20°*40°	1.5
L.546A.10.0012.020.XX.01.050	12	12	500	3000/4000/5000	940/940/1009	20°	1.5
L.546A.10.0012.040.XX.01.050	12	12	500	3000/4000/5000	940/940/1009	20°*40°	1.5
L.546A.10.0018.020.XX.01.050	18	18	500	3000/4000/5000	1409/1409/1514	20°	1.5
L.546A.10.0018.040.XX.01.050	18	18	500	3000/4000/5000	1409/1409/1514	20°*40°	1.5
L.546A.10.0024.020.XX.01.050	24	24	500	3000/4000/5000	1879/1879/2018	20°	1.5
L.546A.10.0024.040.XX.01.050	24	24	500	3000/4000/5000	1879/1879/2018	20°*40°	1.5
L.546A.10.0018.020.XX.01.100	18	18	1000	3000/4000/5000	1409/1409/1514	20°	2.0
L.546A.10.0018.040.XX.01.100	18	18	1000	3000/4000/5000	1409/1409/1514	20°*40°	2.0
L.546A.10.0024.020.XX.01.100	24	24	1000	3000/4000/5000	1879/1879/2018	20°	2.0
L.546A.10.0024.040.XX.01.100	24	24	1000	3000/4000/5000	1879/1879/2018	20°*40°	2.0
L.546A.10.0036.020.XX.01.100	36	36	1000	3000/4000/5000	2819/2819/3028	20°	2.0
L.546A.10.0036.040.XX.01.100	36	36	1000	3000/4000/5000	2819/2819/3028	20°*40°	2.0
L.546A.10.0048.020.XX.01.100	48	48	1000	3000/4000/5000	3758/3758/4037	20°	2.0
L.546A.10.0048.040.XX.01.100	48	48	1000	3000/4000/5000	3758/3758/4037	20°*40°	2.0



Bracket 1:



Bracket 2:

