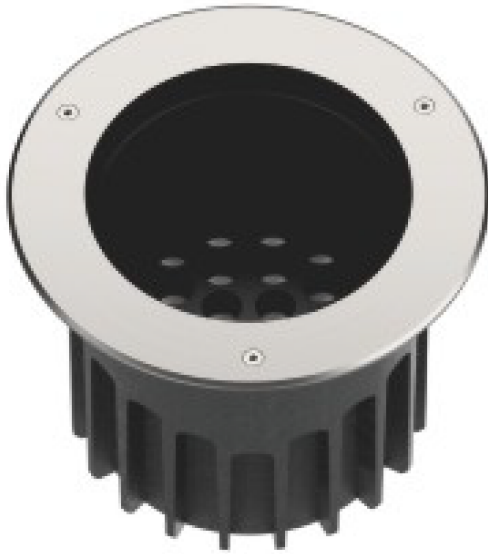
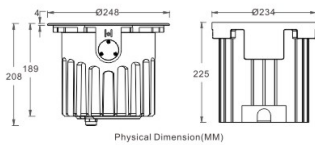


PRODUCT INFORMATION



| | |
|---------------------------|---|
| Application Type | Inground Lights |
| Colour Temperature | 3500K, 6500k, 2700K, 3000K, 4000K, 6000K |
| Housing Type | Die Cast Aluminum, SS Ring |
| Dimmable | Yes |
| Controls | Analog, Dali, On/off |
| Wattage Upto | 32W, 42W, 48w, 54W, 60W |
| Size | dia: 248mm, height: 225mm |
| Driver | Inbuilt, Remote |



| MODEL NO. | POWER | LIGHT SOURCE | LED COLOR | BEAM ANGLE | INPUT VOLT | CONTROL |
|----------------|----------|---------------------|---|--|--------------------|-------------------------------------|
| ET-DIL2481842 | 42W | | | | AC110-240V | ON/OFF |
| ET-DIL2481832 | 148W/54W | 18PCS CREE SMD | 2200-6500K RGB/Y/A | 5°/8°/10°/12°/20°/25°/30°/40°/45°/60°/110°/22°/15° | AC220-240V | 1/Trac0-10V/DALI ON/OFF /Fires |
| ET-DIL2481854A | 42-54W | | | | DC24V/DC36V /DC48V | ON/OFF /PWM/T995 /0-10V/DALI/DMX512 |
| ET-DIL2481854B | 42-54W | | Turnable White 2700K/6500K | | DC24V | PWM/DALI/DMX512 |
| ET-DIL2481854C | 42-54W | 18PCS TYANSHINE SMD | RGB 3in1 | 25°/40°/60° | DC24V | PWM/DMX512 |
| ET-DIL2481860C | 42-60W | | RGBW 4in1 (W: 2700K/3000K/4000K/6500K/9000K/10000K) | | DC24V /AC110-240V | PWM/DMX512 DMX-RDM |